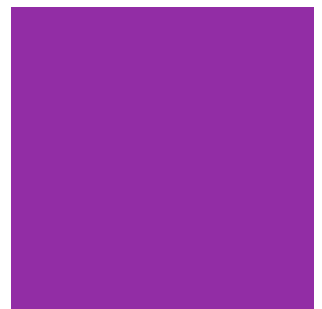
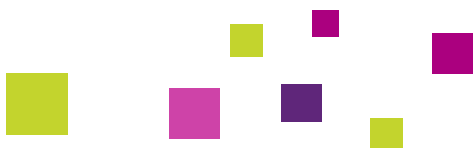
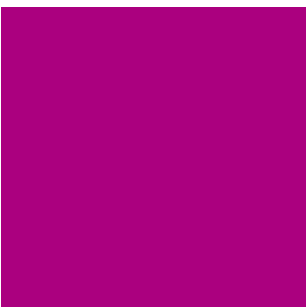
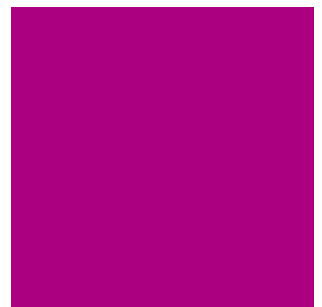


PRESS INFORMATION 2011



Seine-et-Marne
*enjoy a change
of scenery
at the gates of Paris....*



le nouveau
Paris!
Île-de-France



PRESS INFORMATION 2011

Contents:

▶ Practical	<i>page</i>	3
How to get there The County		
▶ Splendors of History	<i>page</i>	4
Chateaux of sovereigns and courtiers - Fontainebleau - Vaux le Vicomte - Champs-sur-Marne - Ferrières		
Sights of the Middle Ages Blandy-les-Tours - Provins - Meaux - Nemours - Larchant - Saint-Loup de Naud - Saint Martin de Champeaux		
▶ Memories of the great war	<i>page</i>	12
The First World War museum in Meaux The battlefields of the Marne		
▶ Land of arts	<i>page</i>	14
Alfred Sisley in Moret-sur-Loing Barbizon home stead of the landscape painters Painter's villages Antoine Bourdelle museum garden in Egreville The painter's trail around Crécy-la-Chapelle Contemporary art		
▶ Magical Seine-et-Marne	<i>page</i>	21
Disneyland Resort Paris - Disney Village - Greater Paris and Seine-et-Marne Information area Shopping stylish at la Vallée Village		
▶ Leisure and outdoors	<i>page</i>	23
- Sea Life Paris - Feline Park Golf courses – Motorsports at la Ferté Gaucher Outdoor adventures		
▶ Lifestyle	<i>page</i>	26
Savours and gastronomy : Brie cheese - Rose products of Provins - Moret barley sugar - Red poppy of Nemours – "Starred" chefs... A wide range of accommodations: Gîtes de France® – Clévacances – Logis de France – Unusual accommodation in the great outdoors - Charming hotels		
▶ Events	<i>page</i>	31
The main events of the tourist season		
▶ Services	<i>page</i>	33
- The Seine-et-Marne Tourist Board - Tourisme 77 Travel - Ile de France: the local FIT - Online services		

Seine-et-Marne
Tourist Board
Press Office

direct call 00 33 1 60 39 60 35

presse@tourisme77.fr

contact :

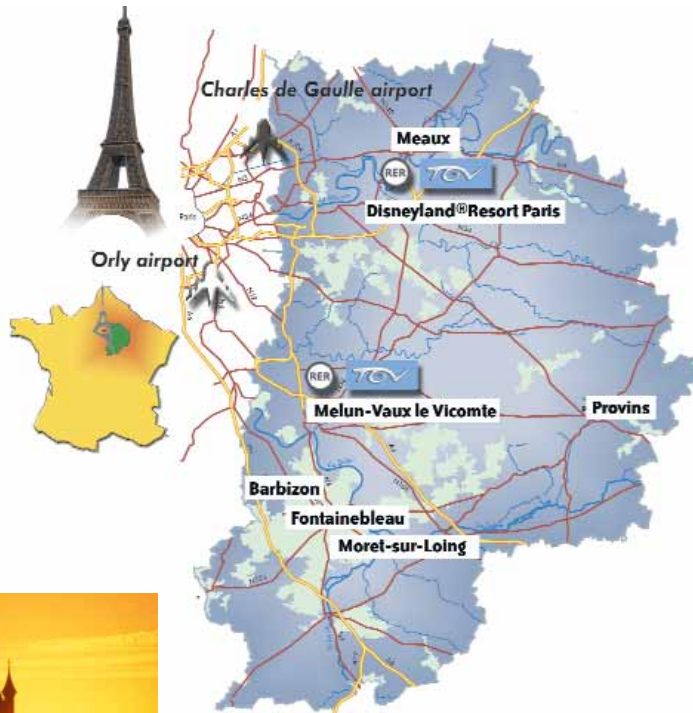
Christiane Schaefer



Seine-et-Marne

enjoy a change of scenery at the gates of Paris....

Practical



The density is of 182 inhabitants per km² for a total of 1 325 235 inhabitants (2008).

Seine-et-Marne counts 102 urban communities, 412 rural communities and 2 new towns.

The County is the most rural one of the Ile de France region and also the greatest area of agriculture with one of Frances highest productions.

Seine-et-Marne gathers 66% of the woodlands of Ile de France with its 120 000 hectares of forest. The national forest of Fontainebleau is the first natural site of France and Europe in terms of visitors (12 millions a year).

With its 3000 km of hiking trails Seine-et-Marne is the green department of Ile-de-France.

With its 2000 km of river and creeks, Seine-et-Marne forms the region's most outstanding area for navigation.

Fontainebleau is one of the tree sites in the world very famous for rock climbing.

Treetop adventure courses, equestrian and pedestrian activities are also other ways to discover our territory.

In terms of tourism the Seine-et-Marne area is the first leisure destination in the Ile de France region and offers 20 000 hotel rooms (the biggest regional offer outside of Paris). The area also offers a great number of camp sites: more than half of the regions capacity. For lovers of self catering and B&B facilities, the area offers more than 300 possibilities.

From the past to the present, Seine-et-Marne is a land of history and culture. The main tourist sights offer a panoramic view of French history. Medieval sites, châteaux and charming villages invite for discovery tours.

How to get there...

Seine-et-Marne is close to Paris international airports of Roissy Charles de Gaulle and Orly.

All the main European cities are within an easy reach and a less than two hours flight.

The TGV great speed trains and the Thalys and Eurostar offer a great and quick connection to northern Europe.

West and southern France are also easy to reach by the TGV network.

Three motorways (A4 - A5 and A6) link the Seine-et-Marne area to east and south.

The county...

The Seine-et-Marne County with its 5 915 km² covers 51% of the regional surface of Ile-de-France east and south of Paris.



Splendors of History

**Chateaux of sovereigns
and courtiers...**



Fontainebleau

"The kings' true home" and "house of the centuries"... Napoleon's comment on his favourite residence is a brilliant résumé of Fontainebleau's true identity. For all the French sovereigns loved, cherished and embellished this château from the Renaissance period to the Second Empire. All the great moments of French history have left a trace in the heart of this château which cumulates incomparable decorations. For if Versailles is the Sun King's palace, and Chambord is François 1er's greatest extravagance, Fontainebleau will always remain the Kings' "family home" and the sovereigns' favourite residence! The "Grands Appartements" include the most prestigious galleries, halls and bedrooms. The "Petits Appartements" show the more intimate aspects of the château life. The empress Eugénie's Chinese museum is a strange facet of Fontainebleau. These rooms illustrate the tendency to collect exotic objects and the desire for comfort characteristic of the Second Empire. The Napoleon I museum shows 15 extraordinary halls dedicated to this exceptional character.

The History of Fontainebleau: eight centuries of magnificence...

From the enthronement of the king Louis VII in 1137 to the fall of the Second Empire in 1870, Fontainebleau was the privileged residence of the French sovereigns. For 700 years Fontainebleau was at the heart of French history, excepting the 100-years-War period during which the kings exiled to the Loire Valley. The palace was spared by the Revolution, even though the furniture was systematically sold. Fontainebleau regained its vocation of "sovereign's home" at the accession of Napoleon Bonaparte and the empire.

The new emperor refurbished the apartments, stayed there on rare occasions between two campaigns, and spent the last days of his reign there before abdicating on April the 6th, 1814. The present château has remained as it was during Napoleon Bonaparte's reign in many aspects. Those who succeeded him, the kings Louis XVIII, Charles V, Louis-Philippe and Napoleon III, also stayed in Fontainebleau château.

Open every day except Tuesday from 9:30 a.m. to 5:00 p.m. 6:00 p.m. in the summer season (from June to September).

Counters close 45min before the end of the afternoon

Musée national du château de Fontainebleau

01 60 71 50 70

www.chateaufontainebleau.eu



Splendors of History

Chateaux of sovereigns and courtiers...



Vaux le Vicomte

The chateau was built for Nicolas Fouquet, the superintendent of royal finances, at the beginning of Louis XIV's reign. The outstanding chateau was to become the cause of Fouquet's disgrace.

Le Vau, Le Brun and Le Nôtre, united for the first time, had achieved a masterpiece at Vaux le Vicomte. When the Sun King discovered the chateau, he immediately became jealous of its perfect harmony. Fouquet was then disgraced and Vaux le Vicomte inspired the idea of the Versailles palace, which was to be even grander and more brilliant.

The tour of the house...

Vaux-le-Vicomte, more on a human scale than Versailles, allows you to blend easily into the "chateau life". The interiors display gorgeous decorations, and the scenery is beautiful. Fouquet's private apartments are on the first floor. The staterooms are on the ground floor. The royal apartment is a typical display. The basement conveys the servants' everyday life through the canteen, the wine cellar and the kitchens.

Activities:

An interesting carriage museum occupies part of the commons.

In the summer season Vaux-le-Vicomte offers candle-light visits on Saturday night from May 7th to October 8th. The first and third Saturday night in the month the candle light visit end with a fireworks finale.

In the gardens you may watch water displays on the second and last Saturdays of each month.

To see the beauty of the park rent a clubcar for a pleasant garden tour.

An Exhibition: "Fame and Misfortune of Nicolas Fouquet" is to be seen during the tour of the house.

Easter egg hunts for children on Easter Sunday

Great century day on Sunday May 22nd.

Capes and Swords evenings in September.

"Chocolate Thrills" on November 5th and 6th.

Vaux le Vicomte celebrates Christmas (decorations and theatre) in December.

Open from March 26th until November 6th from 10 am to 6 pm. Closed on Wednesday except in July and August

Domaine de Vaux le Vicomte - 77950 Maincy
01 64 14 41 90 - www.vaux-le-vicomte.com



► **Splendors of History**

Chateaux of sovereigns and courtiers...



Champs-sur-Marne

Madame la Marquise de Pompadour, an enlightened spirit and great admirer of the arts, chose the chateau at Champs-sur-Marne as her residence and had it genteelly redecorated in the fashion of the day. She adored its very modern style and novel "corridors" that gave direct access to the rooms without the need to pass the rows of furniture in a "dining room" used solely for meals. The gentle gardens leisurely sloping to the banks of the Marne never fail to charm visitors to the chateau.

A residence under restoration ...

The ceilings of the beautiful residence have been weakened by dry rot. The ongoing restoration will soon give visitors the chance to once again admire the rocaille panelling painted by Huet in the XVIIIth century for Madame de Pompadour, other rare works and the outstanding furniture.

Landscaped gardens that follow the fashion...

The gardens enjoyed by today's visitors were re-designed by the Duchênes early in the last century, and are considered one of their most impressive achievements at any of the historic sites where they worked. The classical composition reinterpreted and strengthened by Claude Desgot forms part of a whole in which consistency and the picturesque play off and enhance each other.

Champs-sur-Marne national estate property
01 60 05 24 43

Ferrières

This vast, two-story quadrilateral in the Italian Renaissance style as it was imagined in the mid-19th century reflects the Rothschild family's fortune. Joseph Paxton, architect of London's famous Crystal Palace, designed the chateau, which bears witness to the extravagant tastes of the Second Empire and the wealth of banker James de Rothschild. It was built between 1855 and 1859 for the parties and celebrations of the business bourgeoisie. Ferrières was the theatre of fabulous receptions attended by the Second Empire's "high society". Flanked by four square corner towers, the chateau has a succession of reception rooms on the ground floor and rooms upstairs boasting the latest modern conveniences, which were very scarce at the time: central heating and running water. In 1959 Baron Guy de Rothschild and his wife set about restoring the monument to all its former splendour. In 1977 they bequeathed the 132ha estate to the chancellery of the universities of Paris.

An English park, veritable arboretum

Ferrières Park, which alone is worth a visit, has become famous because of its beauty and the quality of its specialised plants. It offers a wide variety of plant species, some of which are rare in the region. Autumn is the ideal season for admiring the maple trees' reddish reflections responding to the blood red of the cypresses. From the terrace, perspectives of greenery stretch out as far as the eye can see, dotted by lakes and statues creating a planned sense of disorder.

Ferrières Chateau – 01 64 66 31 25
www.chateauferrieres.sorbonne.fr



Splendors of History

Sights of the Middle Ages...



Blandy-les-Tours

If you love medieval history, come discover Blandy-les-Tours castle. Its 2007 reopening crowned 15 years of excavations, restorations and improvements.

Blandy-les-Tours, one of the last witnesses of medieval architecture in Île-de-France, looks like the postcard-perfect castle, majestically deploying its high curtain walls, machicolated rampart walk, arrow slits, merlons, crenellations, moats, towers, keep, etc.

The 14th-century edifice has come down through the ages as a manor, château and simple farmhouse before falling into ruins. Then it underwent restoration in two successive stages.

A tour of the courtyard, keep and curtain walls introduces you to the site's history, rounded out by a visit of the towers. A perfected defensive system makes Blandy les Tours castle an exceptional site for learning about medieval military architecture.

Events:

Sundays in Blandy

Every Sunday from mid April to end of July and from mid September to end of October Shows and concerts in the courtyard or audience room await visitors. The programme invites artists to take the medieval imagination and do every

thing they can with it. The challenge has gone out to actors and artists to show how bold, brilliant and amazing they can be.

Blandy-les-Tours Castle: 01 60 59 17 80
www.seine-et-marne.fr

online ticket booking: www.resa77.fr



Splendors of History

Sights of the Middle Ages...



Provins

The most recent French site to have been registered as a UNESCO World Heritage site, the medieval city of the Counts of Champagne offers visitors a spellbinding trip back to the Middle Ages.

Oyez, oyez, noble lords, gentle ladies, knights, merchants, burghers, soldiers and peasants!

In this year of divine grace, the noble lords and Counts of Champagne are holding a fair in their stronghold of Provins. Under their patronage, drapers from Flanders, fur merchants from Scandinavia, spice traders from Italy, bankers and money lenders have travelled far to reach the city of Provins. The fair shall be held amidst much rejoicing and feasting!

From the 'dîme' to the stall of the merchants of Toulouse...

Standing in the heart of the upper town, the Grange aux Dîmes is testimony to the golden age of the Fairs of Champagne, which abounded in the merchants and tradesmen of the time. The old building originally served as the warehouse for the in kind contributions taken by the clergy (the tax known as the "dîme" or 'tenth', equivalent to the English tithes). The building was then rented to the Merchants of Toulouse to use as their outlet during the fairs.

Ramparts, keep, churches, houses and underground passages: a kaleidoscope of medieval life!

The wonderfully preserved upper town tells the tale of every facet of medieval life. As each new discovery is made, the memories of the knights and soldiers who stood guard over the capital of

the Counts of Champagne, from the tops of the walls, fortified gates and the summit of the impressive Caesar's Tower, become ever more present. The townhouses of the prosperous bourgeois and rich traders are still to be seen, with their splendid cellars used to store goods and to sell their wares. The underground passages are reminders of the local wool industry, because were dug out to extract clay, used by the "fullers" to scour the wool. The religious buildings and their elaborate architecture are a reminder of the fervour and of the wealth of the Counts of Champagne, who were generous in their gifts.

All the aspects of medieval society are on display at Provins! A full programme of events, shows and festivals, from Easter to early November invite visitors to Provins to travel back through time.

Provins Tourist Information Office
01 64 60 26 26 – www.provins.net





Splendors of History

Sights of the Middle Ages...



Meaux

The city of Bossuet the Bishop...

In the heart of Meaux, the ancient Bishop's Palace is one of the last such architectural complexes still standing in France today. In the midst of it stands St Stephen's, a cathedral like no other, a veritable panorama of different Gothic styles.

It was here, beneath the huge vaults of the roof, that Jacques Bénigne Bossuet, nicknamed "the Eagle of Meaux", delivered his memorable sermons, which touched listeners to the very depths of their souls. His conviction, his passion and his poetic and literary skills had a marked effect on both his simple parishioners and the great court figures of the time. He was a unique character, the confessor of the Sun King, who managed to impose Lent on the Court and convert the courtiers and even courtesans such as Louise de La Vallière who, influenced by Bossuet, left the court to devote her sinner's soul to praising the eternal light of heaven...

Bossuet Museum

This museum in the exceptional setting of the bishop's palace in Meaux boasts a collection of old paintings and sculptures unique in Ile-de-France! Local artists and 18th-century religious painters are represented.

Events:

"The Arrows of Time" great historical show in Meaux

From June to September on several Fridays and Saturdays

In its bishop's palace, Meaux reaches far back into its memory and reproduces the most significant dates in its history from the IXth century to the present day. This moving fresco uses the latest production technologies and features over 500 volunteer actors.

Meaux Tourist Information Office
01 64 33 02 26 – www.ot-meaux.fr





Splendors of History

Sights of the Middle Ages...



Larchant

Dedicated to Saint Mathurin, a local saint and healer who lived in the 3rd century, the basilica of Larchant became one of France's most famous pilgrimage.

A great number of kings and queens came as pilgrims to this church. Partially destroyed by the religious wars the church used to be quit huge at the end of the 12th century. Today only the beautiful choir and the Virgin's chapel are still standing.

The Saint Mathurin pilgrimage takes place every year on Pentecost Monday.

Nemours

Medieval town on the banks of the Loing river
Its rich medieval past as a Duchy capital has bequeathed this gorgeous town with a collegiate church (Saint John the Baptist), small, picture-book streets, and, most impressively, the imposing feudal castle that overlooks the river.

It seems that the castle's oldest parts date back to the 11th and 12th centuries. At first it served to defend the town, but the lords returning from the Crusades also used it as a residence. The Armagnacs and, later, the Savoy family acquired the castle, which was often lived in by lords who followed the court to Paris or Fontainebleau. After the French Revolution, the castle was used as a courthouse and prison, school and warehouse.

The square, massive main body is flanked by four towers and connected to the keep by an exterior gallery that was added later. On the Loing side, the walls are high and austere. The river flowing peacefully past and the cheerful, lively town centre nearby soften the façade's severity. On the courtyard side, mullioned windows were added and black, pointed roofs replaced high chimneys during the Renaissance. You can admire the medieval fortress's architecture and collections of paintings and sculptures, most of which date from the late 19th century.

Nemours - Tourist Information Office
01 64 28 03 95 – www.nemours-saint-pierre.com

In the forest close to the village rock climbers may reach the Dame Jouanne rocks one of the summits of the region dominating a beautiful landscape.
Church open each day from 10:00 a.m. to 6 p.m.

Mairie de Larchant - 01 64 28 16 17
www.larchant.com



► Splendors of History

Sights of the Middle Ages...



Saint Martin of Champeaux

During the Middle Ages, the fortified village of Champeaux was one of the most famous and reputed music teaching centres in Europe. The theologian and philosopher Guillaume de Champeaux was a famous character of medieval France closely linked with the Clairvaux and Cistercian movements. The chapter of Champeaux was a reference in many ways as well as for theological and musical teaching as well as for its outstanding architecture.

Saint Martin collegiate church, with its powerful fortified church-tower, counts among the masterpieces of gothic art. The visitor discovers an elegant elevation, strange stalls and

beautiful 16th century stained-glass windows.. Church usually open every day if closed: take the key at the town hall, facing the collegiate church.

Mairie Champeaux - 01 60 66 91 88
www.champeaux-77.fr

Saint Loup-de-Naud

This ancient and picturesque village close to Provins owns a beautiful Romanesque church from the late 11th and early 12th century. Founded and embellished by the counts of Champagne it is dedicated to Saint Loup.

This place was an important pilgrimage in the Champagne region during the Middle Ages. The architecture and the sculptures of the church form an outstanding heritage site one of the rare ones left from the Romanesque period considered as one of the treasures of religious art in the Ile-de-France region.

The portal underneath a porch displays beautiful early gothic sculptures (1160) very much influenced by the cathedral of Chartres. On each side of the portal "column" statues show saints and characters of the Old Testament.

Provins Tourist Information Office
01 64 60 26 26 – www.provins.net



► *Memories of the great war*



The First World War Museum in Meaux...

On the 11 November 2011, the Pays de Meaux district association will be host to an outstanding museum on the Great War.

Discover one of the most extensive displays in Europe, produced using modern technology to bring you exceptionally realistic reconstructions that send you into the midst of the battle.

It is the daily life of the men and women who suffered, and survived, the horrors both at the front and back home that the museum strives to present through this compelling exhibition, while also showing the legacy this conflict has left for life today.

Background:

This outstanding collection at the Great War museum arose from Jean-Pierre Verney, a self-taught private collector and renowned expert on the First World War.

Unprecedented collection!

The vast array of artefacts in this collection makes it one of the most extensive exhibits in Europe, consisting of 50,000 items and documents, over 200 full uniforms from most of the countries involved, a documentation centre with more than 6,000 works, and more.

www.museedelagrandeguerre.eu for more information



Unique site!

The innovative design of the exhibition offers an insight into the Great War to visitors of all ages and levels of interest, who will also admire the way in which the pioneering technologies elevate the collections on display.



► *Memories of the great war*



The Battlefields of the Marne...

The Western Front

During The First World War of 1914-1918 the Allied Forces of Belgium, France, Great Britain, the Dominion Forces of the British Empire (Australia, Canada, India, New Zealand, Newfoundland and South Africa), Portugal and the United States (from April 1918) made a stand against the Imperial German Army's advance and occupation of Belgium from 4th August 1914 and north-eastern France from 6th August 1914. The Western Front: This was the name given to the battlefields in Belgium and France where the British Army spent four years of fighting from late August 1914 to the Armistice in November 1918.

Around Marne and Ourcq

In the Seine-et-Marne area a great number of important operations have been led. The Marne area was witness to two Allied victories, almost exactly four years apart with the first in September 1914 and the second in July-August 1918. Both of these battles to the advantage of the Allies were a turn of the tide of the great war.

In 1914 the French and British forces managed to stop the advance of the German Army within a few miles of Paris in the battle often called the "Miracle of the Marne".

The First Battle of the Marne was fought in September 1914. When Germany invaded Belgium on August 3rd 1914, their movement across Western Europe was swift and in accordance with the Schlieffen Plan. The Belgium army was swept aside with relative ease and the British Expeditionary Army (BEF) had retreated at the Battle of Mons. The French army retreated towards the River Marne and it was here that both German and French armies fought out the first major battle on the Western Front.

The German advance got them as near as 30 miles to Paris. The French capital got itself ready for a siege and the French government left the capital for the safety of Bordeaux.

The French army under the command of Joseph Joffre reached an area to the south of the River Marne. For nearly a fortnight the French army had been on the retreat. Joffre decided that the best form of defence was to attack and ordered an attack on the German First Army. On September 6th, 150,000 French soldiers of the Sixth Army attacked the right flank of the German army. The Germans had to face up this attack and a sizeable split occurred in the whole German army attacking Paris as the German First Army had to redirect its attention towards the French Sixth Army. The Sixth Army, led by Maunoury, faced almost certain defeat had it not been helped by 6,000 infantry reservists who were transported out to the battlefield in taxi cabs!

On September 6th, the French army managed to increase the gap between the German First and Second Armies. This further hampered communications for the Germans. The senior officers commanding the German attack got confusing messages about what was going on in the battle zone. Von Moltke, the German Chief of Staff, feared that the Allies were in a position to defeat the German armies involved in the attack on Paris. Because of this communication breakdown, von Moltke ordered his armies to retreat and they withdrew to the River Aisne.

The Second Battle of the Marne (July 15 - September 16, 1918) marked the turning of the tide in World War I. It began with the last German offensive of the conflict and was quickly followed by the first allied offensive victory of 1918.

Several itineraries starting at Meaux, permit to discover the memories of the Great War around the Marne and Ourcq area.

Land of arts



Alfred Sisley in Moret-sur-Loing...

The town of Moret was a royal residence in the Middle-Ages. Ancient fortifications, lovely narrow streets and the romantic banks of the Loing River form the scenery of many impressionistic paintings.

The medieval settings of Moret-sur-Loing attract many tourists in the summer season. The English Impressionist Alfred Sisley settled here last century and spent twenty years painting the town, the riverbanks and the surroundings.

In the summer season a sound and light show, set up on the romantic riverbanks, displays the local history from the Middle Ages to the impressionist period.

In the footprints of Alfred Sisley...

In Moret-sur-Loing, Alfred Sisley immortalized the well-known view of the bridge and of the town. This famous Impressionist lived for the last years of his life in a humble house not far from the Moret church. The small picturesque streets, the lovely banks of the Loing, the canal and the ancient houses of the town have stayed as Sisley painted them. A small guide, "In the steps of Sisley," takes the visitors to the places where the painter loved to put up his easel.

Thinks to see:

An unusual museum, the "**Conservatoire du vélo**" settled in an ancient firm, retraces the evolution of the bicycle.

The barley sugar museum

The local speciality is the barley sugar once produced by the nuns of Moret-sur-Loing (since the 17th century). Today a local industrial produces this delicious sweet. The museum shows the history of this typical product.

Tourist Office of Moret and its region

01 60 70 41 66



Land of arts



Barbizon, homestead of the landscape painters...

What a destiny this small hamlet of woodcutters, nestled in the forests of the Plain of Bière, was to have! Who would have thought, at the time, that this colony of noisy, bearded jesters would give rise to the greatest Masters of the 19th century, to the Barbizon School and to the birth of Impressionism?

Who would have thought that this modest little inn, run by the Ganne family, where the artists were sought cheap board and lodging, would become a museum, the guardian of the works of its guests of old? By painting on the walls and the furniture, and when the weather was fine heading off to paint the livestock, the farmhands and the chiaroscuro of the forest, living it up in the inn at nightfall, were Narcisse Diaz de la Péna, Théodore Rousseau, Camille Corot and Jean-François Millet, among many others, and it is they who have made Barbizon so famous. Today, the workshop of Jean-François Millet and the Museum of the Barbizon School, with its annex, the home and workshop of Théodore Rousseau, recreate the atmosphere of these famous painters.

**Departmental Museum of the School of Barbizon
"Ganne Inn" – 01 60 66 22 27**

Museum Jean-François Millet – 01 60 66 21 55

In the footsteps of the painters

To perfect your initiation into landscape painting, two walks of 2 to 3 hours will take you in the footsteps of the painters, through the village of Barbizon and the surrounding fields of rocks.

New: twenty mosaic reproductions of the greatest masterpieces of the Barbizon school have been set up in the village and at the entrance to the forest to create an unbroken bond between the countryside, the village centre and the forest. Among the artists being honoured are Jean-François Millet, Théodore Rousseau, John Constable, Jules Veyrasat, Karl Bodmer and others.

**Tourist Office Barbizon – 01 60 66 41 87 –
www.barbizon-tourisme.com**



Land of arts

Painter's villages...



Bourron Marlotte

Set in the heart of a fertile region, forest on one side, rocks on the other, Bourron-Marlotte is bursting with character, with its noble houses and their secret gardens, its river and its spring. The church and the stone brick castle built in the 17th century on the vestiges of a feudal fortress have done nothing, of course, to take away from the village's charm. Around 1830, Caruelle d'Aligny and Jean-Baptiste Corot settled in Marlotte, joined later on by Sisley, Renoir, Monet, Cézanne, Pissaro and Bazille, to name but a few. The Bohemian spirit that guided them led them to take up residence in two of the village's inns, followed in their wake by other painters and writers such as Henri Murger, Théophile Gautier, Alfred and Paul de Musset, Emile Zola, the Goncourt brothers and so on...

Tourist Office - 01 64 45 88 86



Thomery-By

Rosa Bonheur, it is clear, was not a typical 19th century woman. As early as the age of 10, her vocation was clear: she would be a wildlife portraitist. At a time when art schools did not admit

women, she used hard work and her not inconsiderable talent to impose herself as an internationally renowned painter. She set up her workshop at the Château de By in Thomery, in order to be closer to her themes of predilection, fields and rural life, and in her constant quest for realism, she transformed her grounds into a wildlife reserve.

You can download a free MP3 audioguide, "Chaselas and Rosa Bonheur" from www.tourisme77.fr/ – home page – audioguide links (English, Spanish and Japanese translations are available) - 01 64 70 80 14

Grez-sur-Loing

While the Ganne Tower and the church give the village its medieval air, it's the old bridge that was the main "subject" of the works painted here in Grez,



the first of which we owe to Corot in 1860. What made Grez rather special was the fact that, from 1870 onwards, it played host to so many foreign artists: mainly Americans and British, first of all, soon followed by Scandinavians and then Japanese. To discover Grez-sur-Loing, a visit to the Town Hall is a must, to see the collection of famous paintings by Vonnoh, Harrison, Doigneau or Pissaro, a collection which was brought together in 1945 and which is enriched year on year.

Townhall - 01 64 45 95 15 - www.grezsurloing.fr

Land of arts



Departmental garden-museum Antoine Bourdelle in Egreville...

Antoine Bourdelle (1861-1929), son of a carpenter cabinetmaker of Montauban, was from early infancy interested in drawing and modelling. After the School of fine arts in Toulouse and Paris, he worked, in the 1890's, in the workshop of Rodin, for whom he professed a great admiration. Whilst continuing to create personal works there, he started to receive private orders, the first of which was raised in his town of birth in 1902. His notoriety continued to grow and became international at the turn of the 20th century. Bourdelle is one of the greatest French sculptors of his generation. Influenced at his beginnings by sculpture of a ro-



mantic tradition and the work of Rodin, he then developed a very personal style, both denuded and powerful, based on an architectural conception of sculpture and marked by a major knowledge of archaic Greek and Roman art, of which he appreciated the rigor, plenitude and balance.

Michel Dufet and his wife Rhodia, daughter of Antoine Bourdelle, constituted the garden-museum Bourdelle d'Egreville between 1966 and 1969. In 1966, Michel Dufet under-took the installation of a garden and drew up a very organized and complex plan of lawns and embroidered parterres of hardy perennials or annuals whose dominant colours vary with the season. Plantations of conifers structure space, while curtains of poplars or vegetable palisades close the escapes towards the exterior. This creation, inspired by the formal gardens and the gardens of the art-deco epoch, is perhaps the only work of Michel Dufet in this field.

The garden serves as a presentation case for 56 bronze sculptures of Antoine Bourdelle, original bronzes, for the majority where specifically realized for their installation in the garden. Although certain were moved on the arrival of more recent works, it seems that their position was decided according to the decorative effect. The majority of the great achievements of Bourdelle are present; Herakles archer, the dying Centaure or the equestrian statue of the General Alvear ... The presentation of the sculptures within a strictly organized scenery, playing at the same time on the colours and the organization of space, makes it possible to appreciate in all its strength the art of Bourdelle.

Departmental garden-museum Antoine Bourdelle
– 01 64 78 50 90

Land of arts



The Painter's trail around Cr cy-la-Chapelle...

Less than an hour from Paris, you leave the traffic jams and the pollution behind you. The tarmac transforms into farmland, the avenues into rivers, the buildings into forests. You can take deep breaths, live life at a gentler pace! Over the years, this authentic atmosphere has enchanted many an artist looking for inspiration and light. Let us follow in the footsteps of the men and women who have made of Seine-et-Marne a veritable land of the Arts. In the course of the 19th century, painters began looking out for "natural" light and landscapes. Seine-et-Marne, being so close to the capital and easily accessible, was an inexhaustible source of inspiration for them. From north to south, they "set up stall" in the villages, guided only by their own aspirations and sensitivities, strange tourists laden with their easels and tubes of paint. They were the precursors to landscape painting, Impressionism or pointillism.



The Grand Morin Valley ...

Grand Morin Valley is also the Valley of Painters, and standing at its heart is Villiers-sur-Morin. Everything here reminds us of the period when the "Grand Masters" came to enjoy the simple country life. One of the first to fall under the spell was Am d e Servin in 1857. With Albert Grenier, he went



on to create the Artistic Circle of Villiers, which is still active today. Famous artists to have collaborated with them were, for example, Toulouse-Lautrec, Anquetin and Van Gogh... You can still hear their laughter echoing along the footpaths they would have taken from Villiers to Coutevroult, from Cr cy-la-Chapelle to Voulangis and Serbonne, from Saint-Germain to Montaignu. Others were to follow, throughout the 20th century, from America and Japan: Man Ray and Foujita, among others... The walking trails that have been devised, dotted with easels and other symbols of their lives, take visitors through all the styles and schools, all the profound changes inspired by artists in the 19th and 20th centuries.

Pays Cr cois Tourist Information Office
01 64 63 70 19 – www.cc-payscrecois.fr

Land of arts

Contemporary art...



Galerie HorsChamp in Sivry-Courtry

The HorsChamp gallery deals solely with non-mainstream imagery, providing a home for photography and video works in a welcoming and alternative countryside venue. HorsChamp is proud of this identity, which establishes the gallery as a focal point for professional artists from a variety of fields and fans of the visual image, or just for interested visitors who drop in. An innovative site where opinions and emotions are exchanged.
Place de l'église - 01 64 09 11 91 - www.galerie-horschamp.fr

The Espace "Artevie" in Lorrez-le-Bocage

An international contemporary art centre Contemporary art, where the figurative gives way to imagination and interpretation, is sometimes little known, even disregarded, by the general public. Artevie's aim is to create bonds between the artistic world, the rural world and city-dwellers, by pro-



viding a different approach, a different vision of Contemporary Art. Organised in various different sites of historical or architectural interest, the centre offers "walks" to meet the artists of today. These events first saw the day in 2005 in the south of Seine-et-Marne. The creation of an international contemporary art centre helped in the development of Artevie's activities, by providing a venue for exhibitions aimed at various different audiences. Two other plastic arts venues, the Espace du Bocage and the Château de Nanteau, enable workshops and residences to be set up for young talented artists from various countries.

Artevie – 3, rue Emile Bru – 77710 Lorrez le Bocage – 01 64 31 03 56



Galleria Continua in Boissy-le-Châtel

A venue dedicated to contemporary art projects The Galleria Continua, created in Italy in 1990, supports artistic creation by dreaming up new methods of dialogue and hybridisation between unexpected geographies, rural, industrial, local and global, the art of yesteryear and of today, artists of renown and emerging talents. The identity of Galleria Continua has been forged around the idea of exacting contemporary creation bursting forth where nobody expects it. After Italy and China, Galleria Continua is embarking on a new adventure in the Paris region, on former industrial wasteland, by the riverside. Galleria Continua / Le Moulin in Boissy-le-Châtel will be a venue for exceptional international artistic encounters, the home to ambitious exhibitions of artists from all five continents. Galleria Continua has been working in partnership with the Seine-et-Marne council-owned château in Blandy-les-Tours since 2008. This partnership continues in 2011.

Galleria Continua – 46, route de La Ferté Gaucher – www.galleriacontinua.com

Land of arts

Contemporary art... (suite)



Rentilly Cultural Park

In one of the residences lived in and transformed by the Menier family between 1890 and 1997, an ambitious cultural project has grown up, supported by the Marne et Gondoire Community of Agglomerations. The Chateau and its outbuildings, the Orangery, the trophy room and Turkish baths, are now a fabulous venue for cultural and artistic expression. In this exceptionally rich natural and historical site, conducive to the most diverse forms of artistic expression, the park is dedicated to contemporary art and regularly hosts events and temporary exhibitions. The Park's main event is the PrinTemps de paroles festival, an annual multidisciplinary festival that brings together thirty or so professional companies.

Marne et Gondoire Tourist Information Office
01 64 02 15 15 – www.marneetgondoire.fr
Rentilly culture park in Bussy-Saint-Martin
01 60 35 46 72

“Espace la Vallée”

The Vallée Village has always sought to offer its visitors a host of cultural events and ever since it first opened has been home to exhibitions. This new Espace la Vallée, located in the very heart of the Village, provides concrete expression to this long-standing desire by each year offering visitors four exhibitions by artists of considerable talent, one after the other, ensuring that cultural activities are now permanent in the Village and making La Vallée Village a cultural destination in its own right.

La Vallée Village in Serris – 01 60 42 35 01
www.lavallee-village.com

ES Gallery in Provins

With its open spaces opening out onto Place du Château, Provins' ES Gallery invites you on a contemporary journey in an outstanding medieval setting. The idea of the ES Gallery is to show all forms of art. Great names in contemporary art are side by side with new talents. Visitors like the concept of ES Gallery, which honours all artistic techniques: sculptures in bronze, wood, glass, ceramic, resin, etc. All painting and drawing techniques, as well as original jewellery, are on

display. The concept makes ES Gallery a unique, friendly space dedicated to novice as well as experienced art lovers.

6 place du Château – Ville Haute - 01 60 52 07 88 – www.galerie-es.com

Contemporary art at "Les églises" in Chelles

The two adjoining churches of Sainte-Croix and Saint-Georges became a listed building in 1984; they were saved from ruin and restored, and then converted into an exhibition centre for the visual arts by designer Martin Szekely and architect Marc Barani. Its first season opened at the end of 2008. The display schedule – 4 to 5 exhibitions a year – is designed to offer an insight into contemporary art disciplines by tackling and questioning notions of territory (architectural, urban, historical, even in the context of the landscape) and the uses by which they are defined.

Rue Eterlet - 01 64 72 65 70
<http://leseglises.chelles.fr>

The Ferme du Buisson centre for contemporary art in Noisiel

The Centre for contemporary art opened in 1991. It belongs to the national network of art centres and is part of the Ferme du Buisson's multidisciplinary project. For almost 20 years the centre has been committed to a policy of exhibitions, production and



publishing that testifies to how actively it supports contemporary creative art.

Since 2008, it has offered a new programme which promotes a critical, multidisciplinary approach enabling visitors to see how contemporary art can relate to other ways of doing and thinking. With this approach it has marked itself out as a space for exchange: between points of view, between disciplines, between artists and viewers... The programme aspires to be forward looking, by welcoming young artists and artists rarely seen in France.

Allée de la Ferme
01 64 62 77 00 – www.lafermedubuisson.com

Seine-et-Marne

enjoy a change of scenery at the gates of Paris....

► *Magical Seine-et-Marne*



Disneyland® Paris...

2011: Disney Magical Moments Festival at Disneyland® Paris

This year, Disneyland® Paris is celebrating an exclusive Disney Magical Moments Festival! How cool is that? Mickey and his friends have stored up a whole lotta really special moments to share with you. In fact, they've set up some momentastic shows and play areas for you to indulge your imaginations and create memories that both you and Mickey will talk about for years to come.

The excitement starts from the very moment you plan your trip together. Looking forward to the magic that awaits you and guessing what surprises Mickey and his pals have in store is half the fun! The look on your loved ones' faces, the pinch-yourself-you're-here moment and then the one-small-step-through-the-gates moment that will lead to Disney magical moments that you will remember forever!

It could be a mad-cap-moment inspired by Alice and the Mad Hatter where you drink in the madness, get to be really silly together and really let your imaginations go wild.

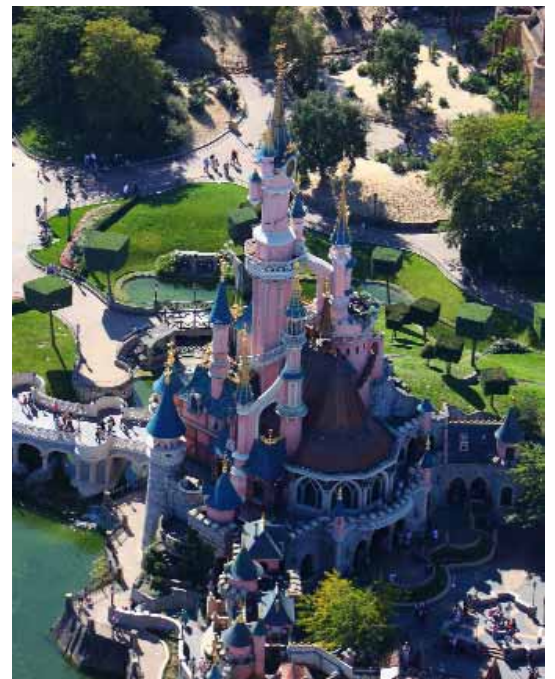
Then, you could find yourself playing "Following the leader with Peter Pan" – a Disney magical moment all pirates like to treasure! Sing along and dance with Peter Pan, Wendy and John in a real crocodile snappin' adventure – that's sure to give Captain Hook a real fright!

A more refined moment may find its way to one's self next. Prepare for the most royal of Royal Invitations...to feel like a fairytale Princess and spend a magical moment with a Disney Princess. It's a dream-come-true-moment to cherish for a happily-ever-after.

Moments change but the feeling you get from them remains the same. A sense of excitement! At the "Adventureland rhythms of the jungle" you get a sense of rhythm too! Tune up the tam-tams and you could get down and get jumpin' with one of the gang if you're lucky – Baloo, King Louie, or wise old Rafiki! After all the fun, foolin' and excitement you'll want to sit down...not for long!

Get up, get your adrenalin pumping and your imaginations racing as Lightning McQueen makes a guest appearance onto the action-packed "Motors ...Action! Stunt Show Spectacular"! Just like Lightning McQueen*, Disney magical moments never screech to halt because Mickey and his friends have arranged loads of other big surprises for you!

And surprises don't come more magical, with more Princes and Princesses, than in Mickey's Magical Celebration. You'll be spellbound from the moment Mickey rubs the Genie's lamp to when he becomes a master magician; Conjuring Disney fairies,



magicians and magical moments out of thin air. Still waiting for the right moment to visit Disneyland® Paris? Well Disney Magical Moments Festival will start on April 6th 2011. This is your year to make your wish-come-true moment with Mickey and his friends. What will your favourite moment be? Join in the celebration and find out!!

For information and booking call (€0,15/mn including tax) at 08 25 30 60 30 or visit www.disneylandparis.com

Seine-et-Marne

enjoy a change of scenery at the gates of Paris....

► **Magical Seine-et-Marne**



Disney® Village...

Entertainment in the heart of Disneyland® Resort Paris ! Unique in Europe and located between the Disney theme parks and hotels, Disney Village is free and recreates the atmosphere of a real American town. Shops, bars, a club, restaurants and the Legend of Buffalo Bill dinner show take you from Florida to California, Chicago to New York, the 19th-century West to Hollywood. The 14-screen Gaumont cinema equipped with cutting-edge technologies, IMAX, PanoraMagique captive balloon and game room round out the range of shows and attractions. Concerts and music festivals are offered year round. Billy Bob's hosts live rock, country, blues, funk, disco and soul concerts every night and the Sports Bar broadcasts major sporting events year round.

Informations : www.disney-village.info



The Ile-de-France, Seine-et-Marne Tourist Office...

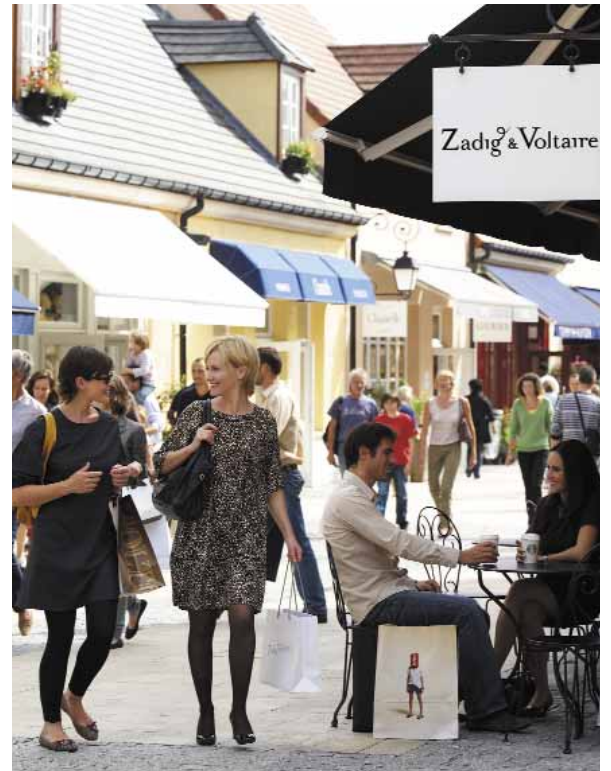
Extend your stay in the area!

This brand new information kiosk open seven days week from 9am to 8:45pm at the entrance of the two parks is the perfect place to find out about accommodations, events, buying a trip to Paris, cruises, shows and major museums. The shop sells sightseeing guides and souvenirs.

Ile-de-France, Seine-et-Marne Tourism Space
01 60 43 33 33 – www.greatparistourism.com

Shopping stylish at La Vallée Outlet Village...

Imagine a place where all the major apparel brands offer low prices year round. It's not a dream, it's Vallée Village just five minutes by car from the Disney parks and open seven days a week. This very pleasant, entirely pedestrian, swanky village with architecture inspired by Ile-de-France hosts approximately 100 French and international fashion and decoration brands. Dolce & Gabbana, Calvin Klein, Baccarat, Burberry and many other brands have chosen Vallée Village to offer year round at cut-rate prices the best products of previous collections from their traditional boutiques.



The ultimate pleasure: treat yourself to a day of shopping in comfort... A daily Cityrama shuttle whisks you from the Cityrama agency in the heart of Paris straight to the doors of Vallée Village.

Every day including Sunday: departures from Paris at 10:15am and from Vallée Village at 4pm. Booking could not be easier: talk to your hotel concierge or visit www.pariscityrama.com

A culture break between two shops?

The Vallée Space at Vallée Village, a contemporary art gallery in the heart of the Village, shows works by internationally recognised artists year round.

La Vallée Village: www.lavallee-village.com

Leisure and outdoors



Sealife Paris...

Located just 5 minutes from Disneyland® Resort Paris in the heart of the Commercial Centre Val d' Europe, Aquarium SEA LIFE takes you on a magic and interactive journey into a fascinating marine world. The centre houses over 300 species in 50 breathtaking marvelous displays including a 360° underwater tunnel of sharks and 2 ocean tanks with sharks and turtles.

Don't miss the touch-pools, regular talks and feeding sessions and the play area at the end of the visit. This unforgettable journey into the magical marine world is a unique educational experience for the whole family!

Exhibition: Dragon des Mers... Hippocampus

In seven new tanks, you will discover about ten species of lovely Seahorses and the famous Sea Dragon, an endangered amazing creature.

The genus word "Hippocampus" belongs to Greek words: "hippos" which means horse and "kampos", marine fish. Since the Antic times, people are surprised by this little creature so different from the others by its equine profile and its battleship aspect.

From the small Pygmy Seahorse (two centimetres long) to the imposing Sea Dragon (45 centimetres long) there are more than 50 species all around the world's oceans.

Unfortunately, today a lot of species are endangered because of intensive fishing and the destroying of their life habit.

SEA LIFE - Val d'Europe - Serris
01 60 42 33 66 - www.sealife.fr

Parc des Félines big-cat park

With its 140 cats representing over thirty different species, from the best known (tigers, lions and leopards,...) to the rarest (clouded leopards, Pallas'cats,...), this park offers its animals a natural environment to ensure their well-being and reproduction. Four circuits take you into the natural habitat of these predators from Africa, Asia, America and Europe. There is also an educational farm for the children and a restaurant decorated with scenes of the savannah.

The park has 2 more attractions includes in the entrance fee:

- **Mission Nature:** All aboard the train for this 20-minute journey that explores our planet and the challenges faced to protect it. Price includes admission to the train and entry to the new film and animated scenes that explain everything from the big bang to the planet's demise at the hands of mankind!

- **L'île des Lémuriens (Lemur's island):** come and meet 40 lemurs on their own territory, a 1 hectar island! Enjoy the biggest facility in captivity given to these species !

Check opening hours on the website

01 64 51 33 33 - www.parc-des-felins.com





Leisure and outdoors



Golf Courses...

The most beautiful greens in the Ile-de-France region... a great choice of courses in Seine-et-Marne both in terms of difficulty and scenery.

Golf UCPA Bois-le-Roi

A 9-hole golf course, with many obstacles and a practice area over a stretch of water, with 10 covered bays. Clubhouse, function rooms.

Base de Loisirs - 77590 Bois-le-Roi
01 64 81 33 31 • www.ucpa-boisleroi.com

Golf Meaux-Boutigny

An 18-hole golf course on a wooded terrain, which has a varied relief. Golf school with 9 holes for beginners. Pro shop, restaurant with a terrace, clubhouse, shop.

Rue de Barois - 77470 Boutigny
01 60 25 63 98 - www.golf-meauxboutigny.com

Golf de Bussy-Guermantes

A flat 27-hole par 72 course, (6, 034m), wooded mounds and lakes. Restaurant, bar, terrace, lounge, pro shop and changing rooms.

Promenade des Golfeurs
77600 Bussy-Saint-Georges
01 64 66 00 00 • www.golfbussyguermantes.com

Cély Golf Club

An 18-hole course which goes through an oak forest with well-kept fairways and greens. Japanese garden, bar, restaurant, pro shop.

Le Château - Route de Saint-Germain
77930 Cély-en-Bière
01 64 38 03 07 • www.club-albatros.com

Golf la Marsaudière

A 9-hole golf course in a forest setting in the grounds of the former castle. Restaurant with a terrace on the water's edge, fireplace.

La Marsaudière, RD471 - 77173 Chevry-Cossigny
01 64 07 87 51

Crécy Golf Club

An 18-hole par 72 course, a compact 6-hole course and a covered practice area with 34 bays. Hotel

complex (29 apartments), swimming pool, tennis court, restaurant.

Domaine de la Brie - 77580 Crécy-la-Chapelle
01 64 75 34 44 – www.crecygolfclub.com

Golf Fontainebleau

18-hole course. Golf course open to the public during the week except on Tuesdays and on weekends. Clubhouse, pro shop, restaurant.

Route d'Orléans - 77300 Fontainebleau
01 64 22 22 95 • www.golffontainebleau.org

Golf Clément Ader

An 18-hole par 72 course in the forest, historical site from where Clement Ader's first aircraft "Éole" took off. Restaurant, bar, pro shop selling supplies, clubhouse.

Domaine du Château Pereire
77220 Gretz-Armainvilliers
01 64 07 34 10 • www.golfclementader.com

Golf Lésigny-Réveillon

A 27-hole course and a 9-hole compact course, with glens and lakes. Putting green, practice area with 100 bays. Hotel, restaurant, brasserie, pro shop.

Ferme des Hyverneaux - 77150 Lésigny
01 60 02 17 33 • www.golflésigny.com

Golf Disneyland

A 27-hole par 36 course, which can be played as 3 different 18-hole courses.

Bar, restaurant, TV lounge, changing rooms with showers, pro shop, clubhouse.

Allée de la Mare Houleuse
77700 Magny-le-Hongre - 01 60 45 68 90
www.disneylandparis.com/fr/golf/index.htm

Golf Ozoir-la-Ferrière

18-hole course, measuring 5,859m in length and a 9-hole par 35 course measuring 2,639m in length. Pro shop, restaurant, children's club.

Château des Agneaux - 77330 Ozoir-la-Ferrière
01 60 02 60 79 • www.golfozoir.org

Golf Montereau la Forteresse

A 18-hole par 72 course, measuring 5,888 m in length, with glens, forests and lakes. Practice area. Fortified farm with a restaurant. Terrace on the course.

Domaine de la Forteresse - 77940 Thoury-Férottes
01 60 96 95 10 - www.golf-forteresse.com

Golf Torcy

A 9-hole course and a compact 3-hole course, practice area. Clubhouse, pro shop, restaurant.

Base Régionale de Plein air et de loisirs - UCPA
Route de Lagny - 77200 Torcy - 01 64 80 80 90

Leisure and outdoors



Motorsports at la Ferté-Gaucher...

Who would have thought that nearly 90 hectares of fallow land would become France's biggest motor leisure activities pole? Aerial and land motor sports enthusiasts, model hobbyists and hot-air balloonists converge on La Ferté Gaucher. This offer of innovative leisure activities, which is unique in France, was created with subsidies from local governments. There are air and land activities at the same site, giving the area an economic boost. Amateurs as well as professionals may use the 150,000 sq m centre.

- aerial motor sports: microlighting
- land motor sports: a green, environment-friendly car track unique in France and SUV and quad introductory lessons
- leisure activities: scale models with a training and indoor test site, squash, well-being space, etc.
- Jet Race...racing on water! The jet boats deliver 450 hp and go from 0 to 60 in 4 seconds! Passengers can enjoy the unbeatable thrill of a triple acceleration into the bend... in complete safety!
- meals and accommodation on site

Information: 01 64 20 52 39

Outdoor adventures...

Seine-et-Marne is the Ile-de-France region's hugest territory offering wide sceneries, rivers and woodlands to fit many outdoor activities, sports and adventures...

Some examples ...

Ballooning

Flood over the beautiful landscapes, majestic chateaux and magical forest and river sceneries... In southern Seine-et-Marne you will find two possibilities for magical balloon rides.

Forest trails

Fontainebleau Forest, which lies within a UNESCO biosphere reserve, is considered the "green lung" of Ile-de-France. Erosion has carved out odd geological formations that plunge you into a magical world. This gorgeous forest beloved by the artists is to be discovered on about 300 km of signed out hiking paths. The Massif of Fontainebleau is a prime climbing site in France. It is made up of blocks of sandstone from 2m to 10m in height and offers many climbing possibilities for everyone, from beginners to the most experienced climbers, for people of all ages, from children to adults.

Adventures in the treetops

Adventure parks and trails in the treetops become a more and more popular leisure activity in the region. All over Seine-et-Marne you will find eight major equipments offering save thrills and family adventure...

On the rivers

Cruising or canoeing as well as many other water sports are possible on the rivers of Seine-et-Marne.

All you need to know about leisure sports and outdoor adventures is pointed out in a special brochure "On ne manqué pas d'air" (with English version) which you can download on www.tourisme77.fr



► **Livestyle...**



preciated by Kings and Queens. Even, Charles d'Orléans offered it to his favourites! A cheese possessing the Appellation d'Origine Contrôlée, the Brie de Meaux is recognized by its soft paste, its finely floured crust, strewn with reddish pigments and by it's slightly pronounced hazel nut taste.

The rose of Provins

Returning from a crusade, at the XIIIth century, Thibaut IV, Count of Champagne, brought back a rosebush from the palace of the sultan of Damascus. He cultivated the rose, which is still used today to create a lot of delicious confectionery... (barley sugar, sweets, jam, fruit jelly...)

Savours and gastronomy...

In the most rural of the departments of Ile-de-France, producers, restorers and craftsmen, gathered within the association "Produits et Terroir Seine-et-Marne", perpetuate a traditional respect of quality and authenticity. On countryside lanes, more than 120 enthusiasts propose the discovery of their skills and the enjoyment of local culinary products. From farmyard poultries to dairy products of the Briarde pastures, from delicious home made pâtés to harvests of crisp, scented fruit and vegetables, from sweet delicacies to vintage beverages, from the culinary talents of local chefs to farmhouse afternoon snacks, Seine-et-Marne is to be savoured with delectation.

The Brie de Meaux

Crowned "king of cheeses" at the time of the Congress of Vienna in 1815, the Brie was much ap-

Moret-sur-Loing's barley sugar

This famous speciality from Moret-sur-Loing made by the nuns of Moret has its own museum presenting an exhibition tracing the history of this candy and a film showing all the stages of its traditional manufacturing.

Red poppy of Nemours

Born in 1850 in Nemours, the red poppy candy is nowadays produced by the chocolate factory Des Lis. The owner created a flavour containing flowers of wild poppy, gathered with the hand on the region of Nemours. From this flavour are born several specialities like liquor, nougats, syrup, crystallized of petals, jam...

All you need to know about local specialties, producers and craftsmen is pointed out in a special brochure (in french) "On réveille vos sens" which you may download on www.tourisme77.fr



Seine-et-Marne

enjoy a change of scenery at the gates of Paris....

Lifestyle...



Savours and gastronomy...

Star Chefs...

The Seine-et-Marne area offers many gourmet addresses... far too many to figure here but just to give you an idea about the gastronomic quality and riches we present you our "Top chefs" distinguished by a star in the Michelin Guide...



Anthony VALLETTE – Chef Restaurant "Le Pouilly"

This young and talented chef is into "today's" cuisine moving habits and reinventing recipes. His very personal touch confers to his dishes a sparkling, dared, creative flavour. The choice of top products and the use of exotic and unexpected spices

offer a culinary travel to different corners of the world. His cuisine is a delicate and precious alchemy of savours and flavours. His cuisine meets beauty and quality, according to the seasons and their special products... A meal at the "Pouilly" is a real emotion not to be missed... The skills and talent of this chef have been recognised by the profession:

Star in the Michelin Guide, and high classification in Gault Millau, Champerard, Bottin gourmand...

Restaurant "Le Pouilly" - 1 rue de la fontaine - Pouilly le Fort - 77240 Vert Saint Denis

01 64 09 56 64 - www.restaurant-lepouilly.com

Philippe GENELETTI Chef of "Les Pléiades" in Barbizon

"I fell hopelessly in love with Les Pléiades as soon as I saw it as it is so much in line with my cuisine" confessed this young - thirty-five years - chef, "just as with my cuisine, the roots, bases, traditions are already in place. They communicate with our memory and it's the resulting interpretation which changes everything"... Philippe Geneletti believes that a good product is the basis for every dish and of course pleasure is always important, but at the same time the reason for going to a restaurant



is to enjoy food served in a different way. This is where style comes in: "Obviously I want the client to be happy with what he has tasted, but I would also like him to be surprised and really delighted in the sense of being captured by the flavours, visual aspects and aromas which I searched for, discovered and created for him, by sometimes associating elements which in principle are never combined".

Before coming to the Pléiades, Philippe Geneletti was, among other things, a trainee with El Bulli, Head Chef at the Mandalay Bay in Las Vegas. A rewarding route, between the best of great French cuisine and the top of molecular cuisine.

Star in the Michelin guide.

Hôtel "Les Pléiades" - 21 Grande Rue - 77630 Barbizon - 01 60 66 40 25

www.hotel-les-pleiades.com/uk

Alain PAVARD – Chef Restaurant "l'Auberge de la Brie" in Couilly-Pont-aux-Dames

His local origins made him a trainee of the Tingaud family (chef of the Elysee). With his sober, chic and discrete restaurant, this chef defends his conviction



of the Brie region's gastronomic reputation. The regional quality products but also top products from all over France make the chef's cuisine a real reference for gourmets. Formerly working with Marc Meneau near Vezelay in Burgundy, Alain Pavard represents the essential qualities of French cuisine without superfluous, complication or artifices. Excellent food and high wines at fair prices, this address is a real must for gourmets...

Star in the Michelin guide

Auberge de la Brie - 14 Avenue Alphonse Boulingre - 77860 Couilly-Pont-aux-Dames

01 64 63 51 80 - www.aubergedelabrie.com

Fabrice VITU – Chef Restaurant "la Table Saint-Just" in Vaux-le-Pénil

Even if he is very happy having obtained his "star" in the mythical Michelin, this chef is not the media type... He comes from a really traditional background rather at ease behind his stove than under the ramp light. Back feed of his quality cuisine comes from his customer who he likes to meet in his restaurant during their meal. The reputation comes from high quality work and produce... True French tradition but not old-fashioned... A perfect choice of dishes according to the seasons and a great know-how without pretensions... Without any doubt an excellent address...

Star in the Michelin guide

La Table Saint Just - 11 Rue Libération

77000 Vaux-le-Pénil - 01 64 52 09 09

www.restaurant-latablesaintjust.com

Seine-et-Marne

enjoy a change of scenery at the gates of Paris....

Lifestyle...



A wide range of accommodations...

Gîtes de France® ...

Gîtes de France accommodations and the friendly, authentic encounters they foster are probably still the best way to discover new places. The men and women who will be your hosts let you into their homes, are to welcome you to places they have arranged, equipped and decorated to meet your needs and make you feel as comfortable as possible. You will find a warm, family welcome. The quiet and space only country houses can offer and thoughtful attention to meet your expectations, make your holiday easier and help you recharge your batteries. Choose your own formula: the comfort of an individual house, a place big enough to accommodate families, groups or hikers, in the countryside or closer to town centres. The classification ranges from 1 to 5 ears, guaranteeing the accommodations' quality.



Seine-et-Marne boasts a wide range of green tourism accommodations. The owners, as their department's veritable "ambassadors", will guide you on your journey of discovery and make it easier for you to visit the environs. Some will even give you the chance to enjoy a car-free weekend by picking you up at the nearest rail station.

Booking and information:

**Seine-et-Marne Departmental Gîtes de France Office
Departmental Tourist Board**

11, rue Royale – 77300 Fontainebleau

01 60 39 60 53 ou 01 60 39 60 54

Booking on line: www.gites-seine-et-marne.com



Want to stay near tourist sites? Have contact with the locals? Nothing could be simpler with Clévances accommodations. Most are easy to reach by public transport and offer "à la carte" formulas from single nights in a bed & breakfast to stays of a week or more in apartments or independent houses in the town centre. The Clévances

Clévances...

Family accommodations in the heart of our towns and villages...

formula adapts to your choice. These quality accommodations for care-free holidays are rated from 1 to 5 keys depending on the amenities, environment and comfort.

Clévances Seine-et-Marne

Seine-et-Marne Departmental Tourist Board

11, rue Royale – 77300 Fontainebleau

01 60 39 60 39 – www.clevances.com

Logis de France...

A family chain and a single state of mind..

New dynamics are energising the Logis de France network. Constantly modernising and on the move, in step with today's expectations and respect for quality, the Logis label has set major goals for 2010. Fresh air is the promise of friendly, authentic addresses to share moments of real pleasure with the family. Every Logis de France hotel is different but all of them share the same state of mind and vision of their trade. Commitment to the Logis de France movement's founding values ensures the label's long-term survival:

a simple, spontaneous, personalised welcome, accommodations combining quality, comfort and modern amenities in a genuine setting, meals based on local ingredients and natural products, and personalised sight-seeing tips to make guests' holidays more enjoyable.

Each hotel is rated on a scale of 1 to 3 "chimneys" and has its own endearing sides, specific features and character, perfectly blending into its environment.

Information and booking on www.logishotels.com/en



Seine-et-Marne

enjoy a change of scenery at the gates of Paris....

Lifestyle...

A wide range of accommodations...

Unusual accommodation in the great outdoors!

Let yourself be drawn deep into nature's heartland here in the Seine-et-Marne, where you will find a range of unusual locations offering extraordinary experiences...

A novel concept that breaks new ground: Acousmahome...

A new type of accommodation in an outstanding natural site... this new tourist facility deep in Fontainebleau forest sits perfectly integrated within the surrounding environment, while the innovative concept perfectly reflects the spirit of its customers seeking to absorb this setting. The name "Acousmahome" already offers a clue to the role of the acoustics in the design. Acousmahome, perfectly insulated, offers its guests almost total, cocoon-like silence... The nest-shaped structure of this accommodation, coiled around a tree deep in the heart of the forest, makes it an innovative and attractive destination that is in perfect keeping with its environment. The use of materials that fit the ideal of sustainable development ensures that every part of the concept is infused with the spirit of nature.

06 60 41 67 48 - www.gitearbonne.com



Tree huts on the Graville estate

Settle into a hut nestling 23 or 30 ft up in an oak tree, in the heart of extensive grounds deep in the Champagne forest, next to the château de Graville. This is the ideal "nest" in which to spend a break or a romantic evening in the tree-tops overlooking the sumptuous landscape. Visitors can choose from 6 types of hut that will suit every taste and bring great delight.

New! The log homes of Graville...

Graville park is happy to present its newest unusual accommodation: a genuine log cottage, just like in Canada! Log houses, originally from Scandinavia, Eastern Europe, cold lands and forests, are made using solid tree trunks that are simply stripped of their bark and stacked and interlocked.

Château de Graville - 01.64.23.08.97

06 85 82 11 14 - www.chateau-graville.fr

New! The gypsy caravans of Bois-le-Roi

In the heart of the Bois-le-Roi sports and recreation centre in Fontainebleau forest are 15 converted gypsy caravans that offer a cosy nest in the great outdoors. The accommodation measures approx. 215 ft² and consists of a main room with a fitted-kitchen area, table and dresser, 3 sleeping berths (2 bunk beds and 1 pull out bed) in the main area, one master bedroom with a double bed.

One caravan has been designed for disabled guests and includes 3 low beds and a converted bathroom.

Regional outdoor centre 01 64 81 33 00

<http://boisleroi.ucpa.com>



A trip to Mongolia... 45 minutes from Paris!

Nestling amid nature just a few minutes from the centre of Paris is a timeless estate that invites you in for a weekend of wellbeing guaranteed to take you as far away from the daily world as you wish! You'll sleep in a cosy and attractively furnished yurt. Natska, our friend from Mongolia, will reveal culinary secrets and recount tales from the womenfolk of the steppes... You'll go from bicycle rides through the forest to tours around great châteaux... In the evening, you'll enjoy a relaxing massage accompanied by the scents of other lands before sharing in an evening meal of Mongolian specialities in the flowering grounds. A journey so far away... and with little greenhouse gas emissions...

Nomade Lodge 01 43 54 77 04 - www.nomade-lodge.com



Seine-et-Marne

enjoy a change of scenery at the gates of Paris....

Lifestyle...

A wide range of accommodations...

Charming Hotels...

In every part of the Seine-et-Marne area, visitor can find warm welcome in high quality settings and find an ideal frame for their stay. The following examples give you a general idea about typical Hotels that you can find in Seine-et-Marne...

In Barbizon, the painter's village:

Hostellerie Les Pléiades****

In the heart of this charming artists' village, this lovely hotel restaurant has taken on a new appearance. It offers country breaks so that you can relax far away from any hustle and bustle, strolling around in the



forest or soaking up the pictorial art, for which Barbizon is known throughout the world. The 'les Pléiades' hotel restaurant is now welcoming its guests with 20 bedrooms housed in the two original buildings as well as in a new wing designed by the architect Mohamed Adib, known for his clean and lively style and his work in luxury hotels. As for the gourmet restaurant, the young head chef, Philippe Geneletti fell in love with the place immediately. Before settling down at les Pléiades, Geneletti worked at El Bulli, Loiseau and at Mandela Bay in Las Vegas. This playful chef, enjoys surprising his guests; he is inventive, witty and poetic, as can be seen with the dishes he has put on the menu, as delightful to read as they are to eat! The 2009 Guide Michelin has already recognized his creativity and talent by awarding him a star. Prices: start from 260 € per night for a double room (standard)

21, Grande Rue - 77630 BARBIZON

01 60 66 40 25 www.hotel-les-pleiades.com

In the medieval town of Provins:

Hostellerie Aux Vieux Remparts***



This atmospheric hotel in the medieval town of Provins will take you right back to life in the Middle Ages. Located in the heart of the upper town and protected by its impressive ramparts, this lovely character property that

blends contemporary building with the old stonework, has 40 absolutely delightful and comfortable bedrooms. They have been completely refurbished and you will be charmed

by the oak parquet flooring, the furnishings with their patina of age, the natural stonework and the luminosity... Adding to the hotel's attractions are also the new Luxury bedrooms and the "Spa Rosa Gallica", a swimming pool, two treatment rooms, jacuzzi, sauna and hammam. When it comes to eating, you have a choice of two "tables" depending on your mood, either the "Aux Vieux Remparts" restaurant serving inventive, gourmet cuisine accompanied by an enticing wine list, or the "Petit Ecu" restaurant with its choice of more traditional dishes that changes regularly. Moreover, throughout the year the hotel offers a 2 night half-board package (with one "diner Plaisir" and one "diner Gourmet"), which also includes a pass allowing you to visit the city's main monuments and a bottle of the medieval aperitif, Moretum Elixir. This is an ideal place to stay and explore the ancient capital of the Counts of Champagne, listed by UNESCO as a World Heritage site.

Prices: start from 115 € per night for a double room

3, rue Couverte - Cité médiévale - 77160 PROVINS

01 64 08 94 00 - www.auxvieuxremparts.com

In the heart of Brie country:

Château de Sancy***



Enjoy a charming stay in this château, former home of the Knight of the Maison-Rouge, in the heart of Brie country, a stone's throw away from Meaux, the town of Bossuet, and just outside Paris.

Completely refurbished in 2002, this delightful property dating from the seventeenth and eighteenth centuries has 21 spacious bedrooms, either in the château or the hotel accommodation in the park. The elegant and sophisticated character of each room and the top of the range comfort provided here will captivate you. During your stay make sure that you book your table in "La Catounière" the château's restaurant. Delicate and subtle gourmet cuisine... an autumnal salad with quail, supreme of guinea fowl with (home made) foie gras and tart of pears cooked in red wine and spices... awaits you here in refined nineteenth century surroundings, unless in the summertime you would prefer to eat on the lovely shaded terrace. From the warm and mellow décor inside to the sun loungers on the terrace, from the covered swimming pool to the 20 acre park equipped with a range of activities, every detail has been taken care of to ensure that your stay here offers high-quality comfort and relaxation. So go on treat yourself!

Prices: start from 120 € per night for a double room

1, place de l'Eglise - 77580 SANCY-LÈS-MEAUX

01 60 25 77 77 - www.chateaudesancy.com

Events...

Main events of the tourist season...



From 28 February to 23 May

"Imperial childhood, king of Rome son of Napoleon", an exhibition at Fontainebleau château

Based at the same time on the prestigious Napoleonic past and on having to hand a unique collection, this exhibition Imperial childhood, King of Rome, son of Napoleon throws light on the first years of the future and short-lived Napoleon II, the Eaglet. From 23 to 25 April, a Bivouac for the Emperor's soldiers will be set up at Fontainebleau château.

01 60 71 50 70 - www.chateaufontainebleau.eu



From April to November :

Medieval shows in Provins

- **"The Legend of the Knights"** From 2 April to 1 November- A fantastic medieval show on horse-back, the only one of its kind in Europe: feats on horse-back, fights, cavalcades, trick riding, where stunts and animals come together... 01 60 67 39 95

- **"Eagles of the Ramparts"** - From 2 April to 1 November - Through the legend of Bavon the falconer, a great hunter in the 12th century, you will discover the wonderful magic of these birds of prey, in perfect harmony with the horses. After the show you can visit the aviaries and the wolves' enclosure. 01 60 58 80 32

- **"The Age of the Ramparts"** From 18 April to 1 July - Come and see how identical copies of the amazing war machines from medieval times work and watch an entertaining, non-stop show with demonstrations of games on horse-back. 01 60 67 39 95

From 16 April to 18 July - In Barbizon

"Simon Lantara (1729-1778) a landscape painter and his legend", an exhibition in the Théodore Rousseau studio-house in Barbizon

Specializing in landscape painting, Simon-Mathurin Lantara is considered to be a forerunner of the Barbizon School. Many documents testify to this legend 01 60 66 22 27

Beginning of May : The 1st eco-tourism centre in the Ile-de-France opens in Fontainebleau forest

Right in the heart of Fontainebleau forest, the Ile-de-France's first eco-tourism centre will open its doors at the end of April. This centre absolutely has to be your starting point for your walks in the forest, as it will give walkers advice as well as inviting them to explore the surrounding natural heritage sites, sometimes less well-known but just as rich. Seine-et-Marne tourist board

01 60 39 60 39 - www.tourisme77.fr

7 May to 8 October : Candlelit evenings at Vaux le Vicomte château

France's most beautiful private château offers its visitors a unique experience: a candlelight tour every Saturday night from May to October. Over 2,000 candles flicker in the château and gardens as visitors enjoy a glass of Champagne on the terrace and listen to classical music.

01 64 14 41 90 - www.vaux-le-vicomte.com

22 May "A day in the 17th century" at the Vaux le Vicomte château

Step back in time and dress up in a 17th or 18th century costume in order to celebrate a special day at chateau Vaux-le-Vicomte - 01 64 14 41 90 - www.vaux-le-vicomte.com

From 27 to 29 May: Art History Festival in the Château de Fontainebleau

The French Ministry of Culture has created a new event: the Art History Festival. The theme chosen for this inaugural edition is the "Madness", and Italy is the guest of honour country. Art education workshops, forums, an art film Festival, a book and art magazine fair, etc. will take place within the Château.

01 60 71 50 70 - www.chateaufontainebleau.eu

Meaux historical show "The Arrows of Time" in Meaux

Fridays and Saturdays from 17 June to 17 September (except for some dates) 01 64 33 02 26

From 18 June to 19 September "Speaking to the heart and soul, painting according to Marie Leszczynska", an exhibition at Fontainebleau château

Many aspects of the décor of the Grands and Petits Apartments in Fontainebleau château are still testament today of the taste of Marie Leszczynska, Louis XV's wife and queen of France from 1725 to 1768. Using works painted by Oudry, Nattier, les Coytel, Vien and Pierre - and those executed by the queen's own hand - a whole atmosphere gone forever is reconstructed for the period of this exhibition.

01 60 71 50 70 - www.chateaufontainebleau.eu

18 and 19 June The Provins Medievales

France's most important medieval festival
01 64 00 39 39 - www.provins-medieval.com

22 to 26 June "Django Reinhardt international jazz festival" in Samois-sur-Seine

Django Reinhardt is buried in the village of Samois-sur-Seine, where jazz enthusiasts flock each year for a tribute to the renowned gypsy musician in this festival that offers a complete musical panorama with jazz greats from around the world and gypsy jazz combos. 01 64 69 54 66

Events...

24 June The full white evening dress dinner at château Bourron-Marlotte 01 64 78 39 39



1, 2 July Madame Butterfly by Giacomo Puccini
An open-air opera at Fontainebleau château
01 60 71 50 70

2 July and 6 August The Lights of Time in Provins
These two special evenings give visitors the chance to explore the medieval quarter at night by the light of hundreds of candles. Traders and restaurants are open in a fairytale musical atmosphere.



Provins Tourist Information Office – 01 64 60 26 26
– www.provins.net

28 August - Provins
Traditional harvest festival in the medieval city
Provins Tourist Information Office – 01 64 60 26 26
– www.provins.net



9, 10, 11 and 16, 17, 18 September
Show "The era of the Musketeers" at château
Vaux le Vicomte

Two shows every night take you back to the fabulous era of the 17th century during the war between France and Spain. The fighting skills of the famous Musketeers will be the object of this show. Visitors may also attend dinner in a genuine 17th century Inn.
01 64 14 41 90 – www.vaux-le-vicomte.com



17 and 18 September
The steam engine Shed of Longueville celebrates its 100 years of existence

This unique venue is the museum of the AJECTA, which decided to celebrate this anniversary by an unedited steam locomotive and train gathering. Some American locomotives, ordered by France for its reconstruction after the Second World war, will bear witness to the last chapter of steam engine history in France. 01 64 08 60 62



18 September
"Nesles Retro Expo" is one of the most important meetings in France for "Oldie" lovers. Automobiles, motorcycles, trucks and farm engines, fire department cars of military engines, this is the place to be if you love antic mechanics. A full program of shows and music make this a perfect day out...
01 64 07 43 34



24 and 25 September
The 1900 Festival in Moret-sur-Loing

During a weekend the medieval town of Moret, on the banks of the Loing river offers its visitor's a revival of the ambiances and the lifestyle during the era of the turn of the century... The town and its shops dress up in past's fashion and invite the visitor to join the festival. 01 60 70 41 66



1 October - Festival of the Brie cheese in Melun
This festival offers special entertainment, tastings sessions and local specialities shops as well as a contest of the best Brie de Melun and special gourmet menus in the local restaurants. 01 64 52 64 52

1 and 2 October
Medieval festival in Brie-Comte-Robert
Around the medieval castle the city celebrates the glorious pages of its medieval past. Tournaments, shops, parades, musicians and shows take the visitors back to the 13th century... 01 60 62 64 00

16 October
In the foot steps of Robert Louis Stevenson...
An hiking excursion throughout the Fontainebleau forest between Barbizon and Grez-sur-Loing following the trail of the famous novelist.
01 60 71 91 16

15 and 16 October- On the farm taste trail
This initiative from the Seine-et-Marne is setting a trend across the region. The farm taste trail (La Balade du Goût) brings together around 50 farms who are offering free entry so that visitors can discover their livestock and taste and enjoy the authentic touch and know-how that go into their produce!
01 64 79 30 63 - www.balade-du-gout.com

1 to 30 November
Seine-et-Marne's Autumn of Tastes
50 restaurants are inviting lovers of fine food on a journey into the generous range of gourmet produce that is typical to our region.
01 64 09 63 80

5 and 6 November
"Chocolate thrills" in Vaux le Vicomte
A chance to discover the know-how and flavours created by the chocolate makers holding this gourmet experience at Vaux-le-Vicomte château, whose owners play host to a number of renowned craftsmen in an atmosphere that is never less than warm and friendly. Workshops and tasting sessions are on the programme for all gourmets.
01 64 14 41 90 - www.vaux-le-vicomte.com

3, 4, 10, 11 December and from 17 to 31 December (except 25 December)
Vaux le Vicomte celebrates Christmas
A totally new interior mood that delivers a surprise in the form of an amazing forest and a decor the likes of which has never before been seen in France. The magic continues its wondrous work in the castle grounds.
Château de Vaux le Vicomte - 01 64 14 41 90 - www.vaux-le-vicomte.com

Services...

The Seine-et-Marne Tourist Board...

Information and services for visitors and media!

The Seine-et-Marne tourist board offers a wide range of services for the visitors but also for professionals and media that like to discover the area. As a part of the local County general council, the tourist board centralises every information about touristic, cultural or leisure activities open to the public. The board publishes free brochures in order to inform the visitors. One of the main roles of the tourist board is to be a central partner for tour operators; travel agents who would like to include this destination in their travel programs and brochures. The board also offers a press office in order to provide information for the media or welcome journalists wanting to make a report about the area's tourist offer. The tourist board is also the main partner for local professionals in the tourist business.

Seine-et-Marne Tourisme
11 Rue Royale
77300 Fontainebleau
smt@tourisme77.fr
www.tourisme77.fr
00 33 1 60 39 60 39



Tourisme 77 Travel...

The local FIT incoming agency

Tourisme77 Travel is in fact a department of the tourist boards and operates as the local FIT incoming agency providing on scale programs for the travel industry and business travel concepts and incentives as well as a wide online offer for individuals including sales for Disneyland Paris.

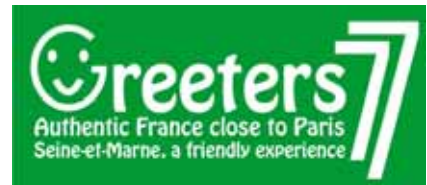
Tourisme 77 Travel
11 Rue Royale
77300 Fontainebleau
smt@tourisme77.fr - www.tourisme77.fr
00 33 1 60 39 60 39
Online bookings on www.resa77.co.uk

The Seine-et-Marne Greeters...

27 inhabitants of our area are part of the "Greeter Network"...

The idea is to offer the visitor's a possibility to share a moment with a local person who will point out his favourite places, strolls or villages. Born in New York city in 1992, the "Greeter Network" is spreading little by little all over the world. Seine-et-

Marne got involved in the network on the initiative of the Tourist board that has federated 27 volunteers around the idea of friendly and free welcome for visitors in Seine-et-Marne.



The tourist board's website homepage holds a link towards a page presenting the areas and themes that you can discover in company of a Seine-et-Marne Greeter.

Connect on www.tourisme77.co.uk

Online services...

Plan your trip on line at

www.tourisme77.co.uk

Never been to Seine-et-Marne, or have been but want to find out more and perhaps plan a weekend or holiday?

The Seine-et-Marne Departmental Tourist Board's www.tourisme77.co.uk site has all the information you need to discover Seine-et-Marne. It focuses on every theme, from must-see heritage sites to recreational activities, accommodations in all categories, means of transportation and tourist events. The whole site has been designed to offer you the best service and above all the most accurate information.

Book on line at

www.resa77.co.uk

Discover a top choice of stays, weekends and excursions as well as ticketing for many Seine-et-Marne venues. Find the best accommodation according to your personal taste and budget. When you make your choice, click on the "Booking" page to buy your holiday on line. There's no shortage of choices!





**Seine-et-Marne
Tourist Board**
Press Office
direct call 00 33 1 60 39 60 35
presse@tourisme77.fr
Your contact :
Christiane Schaefer

